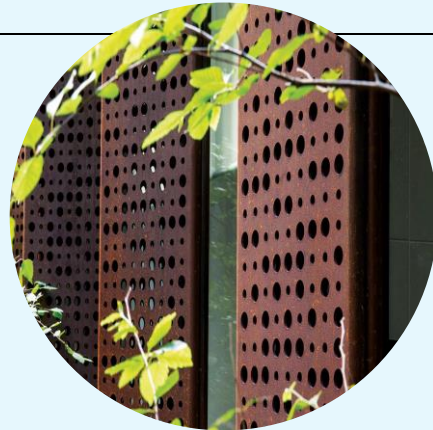


# REDCOR®

## weathering steel (coilplate)

### AS/NZS 1594 - HW350A



#### General description

HW350A is a high phosphorous structural weathering steel with a minimum yield strength of 340MPa.

#### Typical uses

- Non-structural architectural applications such as solid façades, walls, perforated screens, light sculptures, landscaping features, fences, signage, noise wall barriers.

#### Features & benefits

- Reduced atmospheric corrosion when used in the correct environments
- Guaranteed minimum strength levels
- Good toughness

#### Warnings

- This material should be used in conjunction with the appropriate structural design and welding standards
- The weathering properties of this material is due to the formation of an impervious oxide layer through the use of alloy additions. Damage to this

layer, or environmental conditions affecting the development of this layer, will impact on the effectiveness of the corrosion resistance.

- Colour retention across welds can be achieved by appropriate electrode selection. Welds may be susceptible to hot cracking
- Weathering steels are not recommended without further protection for buried or submerged situations or for applications exposed to concentrated industrial fumes or severe marine conditions
- Oxide staining of surrounding areas may occur due to run-off from this material
- Refer to BlueScope Technical Bulletin No. 26 for more information regarding the use of this material

#### Australian and International standards

AS/NZS 1594:2002 (R2016)

AS/NZS 1365:1996 (R2016)

ISO9001:2015 Quality System certified

#### Supply conditions

	Normal
Thickness Range	3 – 10 mm *
Width Range	1155 – 1250 mm *
Length Range	1200 - 12000 mm *
Surface Finish	Hot Rolled
Edge Condition	Untrimmed (Mill Edge)
Flatness	Class A (Sheet and Plate)
Certification	BlueScope

\* Not all thickness, width & length combinations are available

## Chemical composition

Element	Guaranteed %	
	Min	Max
Carbon	-	0.15
Silicon	0.15	0.75
Manganese	-	1.60
Phosphorus	0.055	0.16
Sulfur	-	0.03
Chromium	0.35	1.05
Nickel	-	0.55
Copper	0.15	0.50
Aluminium	-	0.10
CEQ (IIW)	-	0.54

All values shown refer to the relevant Australian Standard unless otherwise stated

$$CEQ(IIW) = C + \frac{Mn}{6} + \frac{(Cr + Mo + V)}{5} + \frac{(Cu + Ni)}{15}$$

\* Values shown refer to the BlueScope internal standard

\*\* Vanadium ≤ 0.10 %. Niobium + Titanium + Vanadium ≤ 0.15%

## Mechanical properties

Tensile Properties (Longitudinal)		Thickness (mm)
		3 ≤ t ≤ 10
Yield Strength (MPa)	Guaranteed Min	340
Tensile Strength (MPa)	Guaranteed Min	450
Elong. on 200 mm (%)	Guaranteed Min	15

## Fire hazard properties

Test & Evaluation Method	Result
Combustibility test for materials (AS 1530.1-1994 (R2016))	Not deemed combustible

**RedCor®**

[steel.com.au/redcor](http://steel.com.au/redcor)

To learn more about this product

1800 024 402

[steeldirect@bluescopesteel.com](mailto:steeldirect@bluescopesteel.com)

For more information contact Steel Direct



The information contained in this datasheet is provided by way of general information about this product only, and has not been prepared with your specific needs in mind. We recommend that you seek BlueScope's advice as to the suitability of this product for the purpose(s) for which you propose to use it. To contact BlueScope for advice about your proposed use of this product, please contact Steel Direct. REDCOR®, BlueScope and the BlueScope brand mark are registered trade marks of BlueScope Steel Limited. All rights reserved.

© 2020 BlueScope Steel Limited ABN 16 000 011 058